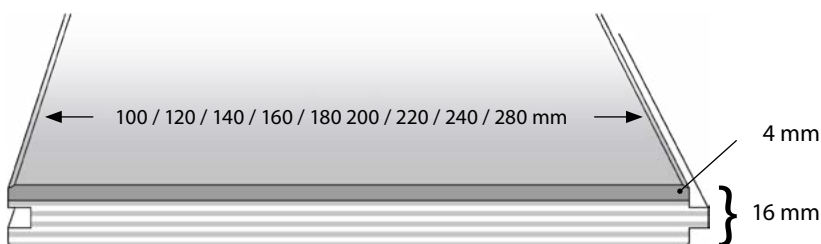


## HKS Krügers 16 mm, oak

<b>Type/Construction</b>	1 strip plank in 2 layer construction, approx. 4 mm top layer oak on birch plywood, WBP glued
<b>Dimensions</b>	16/4 x 100 / 120 / 140 / 160 / 180 / 200 / 220 / 240 / 280 mm
<b>Lengths</b>	random lengths 600 – 2.000 / 2.400 / 2.800 mm; system-packaging; 4 – 6 layers per bundle
<b>Packaging</b>	shrinking foil, end cap, maintenance and installing instructions included
<b>Profile</b>	all around tongue and groove, longside beveled (GO2)
<b>Surfaces</b>	Pure, Honey, Almond, Cacao, Espresso, Mocca, Crema, Macchiato, Nougat, Milk, Caramel, Vanille, Sugar, Coco, Original, Natural, Real
<b>Production</b>	according to EN 13489
<b>Grading*</b>	According to the quality description of the manufacturer. Inside this grades it is allowed: <b>ABCD grade:</b> sound knots, filled knots, smaller cracks, filled cracks in the surface, rarely cracks in the filler, vivid structure, natural differences in colour, , sapwood up to ¼ of the width, other wood typical characteristics. <b>AB grade:</b> sound knots up to 10 mm, filled knots up to 3 mm, minor hairline cracks, natural differences in colour.
<b>Installation</b>	glueing down on concrete or floating installation on Elastilon; always according to the instructions of the manufacturer (glue, Elastilon, etc.)
<b>Maintenance</b>	depending on use with suitable maintenance products
<b>Underfloor heating</b>	suitable up to 240 mm width, only warm water system, no electric heating systems, surface temperature max. 29° C with equal heating, heat conductivity 0,17 W (m k); thermal resistance 0,094 m <sup>2</sup> K/W
<b>Fire resistance</b>	D <sub>n</sub> -s1
<b>Labelling</b>	CE; A+
<b>Hints</b>	Wooden floorings are a natural product, due to climate conditions joints can occur in winter and the planks can swell in summer. Therefore an expansion gap to the walls of min. 15 mm is necessary. According to the behaviour of the planks the customer must be advised.



\*According to the factory standard, 3% clause to EN standard, max. 3% of the complete delivery including the cutting differences can differ from the grading description. The material must be checked before installation, claims after the installation are impossible.